

A large, abstract graphic composed of various shades of blue (from light cyan to dark navy) arranged in a circular, spiral-like pattern that resembles a stylized globe or a complex architectural structure. The pattern is made of overlapping rectangular and square segments.

innovative  
minds  
@  
work...

## **BHM CORPORATION**

### **Pioneers in Engineering for 2 decades**

As a leading force in industrial manufacturing, BHM CORPORATION has thrived for two decades, driven by original technology and ceaseless innovation. Our success story is empowered by a team of dedicated and experienced technical experts, as well as a robust R&D division

Despite industry giants, we've consistently emerged victorious, scaling new heights with technical mastery and infrastructural support. We stand tall, nurturing creativity and believing in the limitless power of imagination, expanding our reach across diverse business domains.

#### **Key Strengths:**

- ▲ **Original Technology & Innovation:** Setting industry standards.
- ▲ **Dynamic Team:** Experienced technical experts drive our success.
- ▲ **Strategic Growth:** Scaling new peaks with expertise and support.
- ▲ **Idea-Driven Approach:** Nurturing boundless imagination.
- ▲ **Ingenuity & Creativity:** Our pillars of success.

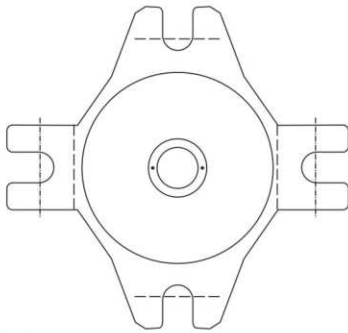
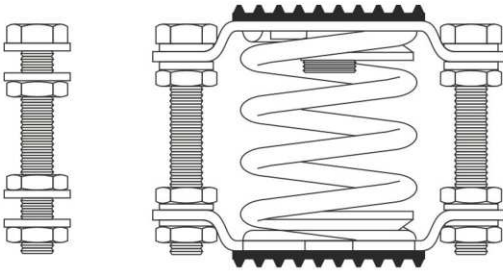
Join BHM Corporation on our continued journey of growth and excellence. With our vision, values, and commitment, we're poised to remain a dynamic force in the years to come.



# ISOLATORS

## Anti Vibration Mount





Spring made of steel EN45 with surface protected by cathophoretic treatment. The spring is locked to the plates with disk and sleeves.

2 Steel plates 4mm thick with holes. 2pairs of holes for the insertion of braces for the 'spring locking' a pair of holes for the anchorage to the supporting structure. (the locking system is used to prevent the suspended machine from swinging when moved)

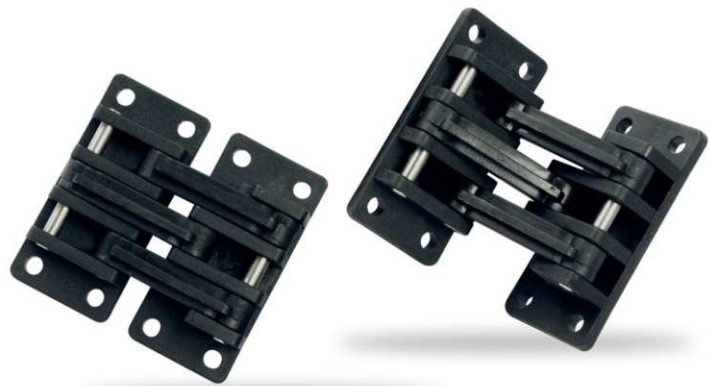
Hollow bushing M8 on the upper plate.

2 braces with toothed nuts and washers in zinc-plated steel

2 antioil elastomer gaskets applied on the two bearings damp sound vibrations.

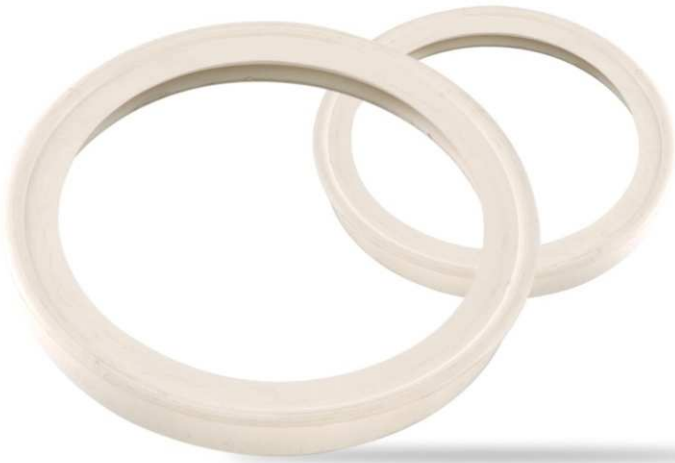
Model/Code	K Kg/mm	Max Static Load Kg	Max Deflection mm	h mm
KBD 02	0,5	21	42	106
KBD 04	1,0	39	39	
KBD 05	1,6	63	39	
KBD 06	2,1	79	38	
KBD 08	2,8	104	37	
KBD 09	3,9	142	36	
KBD 12	5,0	182	36	
KBE 14	6,3	227	36	
KBE 20	7,5	247	33	
KBE 22	9,6	324	33	
KBE 30	11,8	380	32	
KBE 300	13,4	392	29	
KBE 301	15,0	427	28	
KBE 305	16,5	458	28	





# HANDLES





# CAM / STOPPER / DIFFERENTIAL PORT







# LATCHES - KNOBS





# BUSH SETS



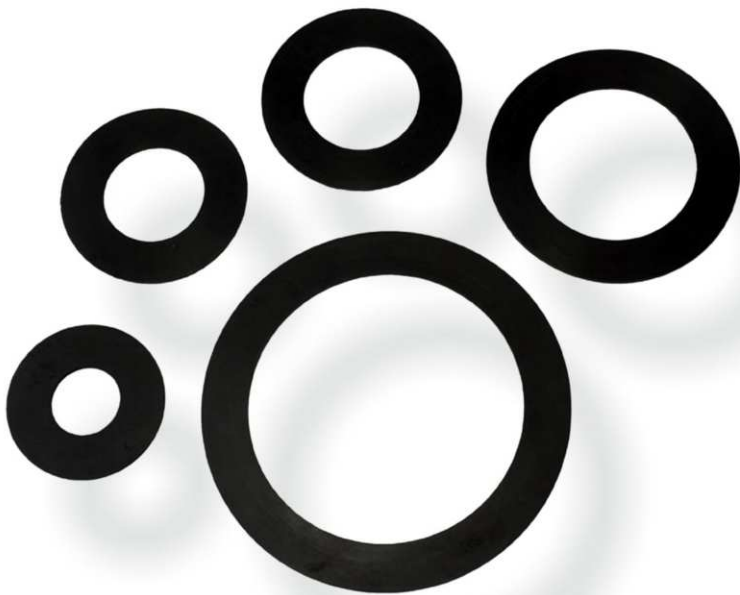
# RUBBER FLANGES & GI GASKETS





RUBBER GLANDS / SLEEVES / PLUGS





# WINDOW GLASS - WINDOW GASKET











# STRIKER NUTS - MOTOR STOPPER - WORM SHAFT - SPINDLES





**TERMINAL BOX**



**VENTILATION 'L' CLAMP**



**OMEGA JOINT**



**NRD BUSH SET**



**ADAPTOR**



**SWIRL DIFFUSER**



**ALUMINUM HUB**





## **BHM CORPORATION<sup>®</sup>**

 41, LIC Colony, R.S. Puram  
Coimbatore - 641 002,  
INDIA

 + 91 422 4366 956 / 4366 976

 [info@bhm.co.in](mailto:info@bhm.co.in)